

Product datasheet for **AP18118PU-N**

MOSC2 (MARC2) (C-term) Rabbit Polyclonal Antibody

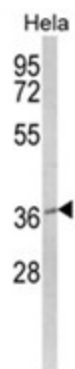
Product data:

Product Type:	Primary Antibodies
Applications:	WB
Recommended Dilution:	ELISA: 1/1,000. Western blotting: 1/100 - 1/500.
Reactivity:	Human
Host:	Rabbit
Clonality:	Polyclonal
Immunogen:	KLH conjugated synthetic peptide selected from the C-terminal region of human MOSC2
Specificity:	This antibody reacts to MOSC2.
Formulation:	PBS with 0.09% (W/V) sodium azide State: Liquid purified Ig
Concentration:	lot specific
Purification:	Affinity chromatography on Protein A
Conjugation:	Unconjugated
Storage:	Store the antibody undiluted at 2-8°C for one month or (in aliquots) at -20°C for longer. Avoid repeated freezing and thawing.
Stability:	Shelf life: one year from despatch.
Gene Name:	mitochondrial amidoxime reducing component 2
Database Link:	Entrez Gene 54996 Human Q969Z3
Background:	Catalytic component of the benzamidoxime prodrug-converting complex, a complex required to reduce N-hydroxylated structures, such as benzamidoxime prodrug. Benzamidoxime is an amidine prodrug produced by N-hydroxylation which is used to enhance bioavailability and increase intestinal absorption. It is then reduced into benzamidine, its active amidine, by the benzamidoxime prodrug-converting complex.
Synonyms:	MOSC2; RP11-270A6.1
Protein Families:	Transmembrane



[View online »](#)

Product images:



Western blot analysis of MOSC2 Antibody (C-term) in HeLa cell line lysates (35ug/lane). MOSC2 (arrow) was detected using the purified Pab.