

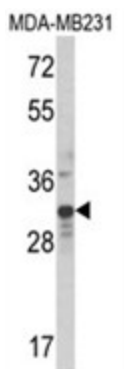
## Product datasheet for **AP18116PU-N**

### MLX Rabbit Polyclonal Antibody

#### Product data:

Product Type:	Primary Antibodies
Applications:	WB
Recommended Dilution:	ELISA: 1/1,000. Western blotting: 1/100 - 1/500.
Reactivity:	Human
Host:	Rabbit
Clonality:	Polyclonal
Immunogen:	KLH conjugated synthetic peptide selected from the Center region of human MLX
Specificity:	This antibody reacts to Max-like protein X.
Formulation:	PBS with 0.09% (W/V) sodium azide State: Liquid purified Ig
Concentration:	lot specific
Purification:	Affinity chromatography on Protein A
Conjugation:	Unconjugated
Storage:	Store the antibody undiluted at 2-8°C for one month or (in aliquots) at -20°C for longer. Avoid repeated freezing and thawing.
Stability:	Shelf life: one year from despatch.
Gene Name:	MLX, MAX dimerization protein
Database Link:	<a href="#">Entrez Gene 6945 Human Q9UH92</a>
Background:	MLX belongs to the family of basic helix-loop-helix leucine zipper (bHLH-Zip) transcription factors. These factors form heterodimers with Mad proteins and play a role in proliferation, determination and differentiation. This protein may act to diversify Mad family function by its restricted association with a subset of the Mad family of transcriptional repressors, namely, Mad1 and Mad4.
Synonyms:	MLX, TCFL4
Protein Families:	Druggable Genome, Transcription Factors

[View online »](#)

**Product images:**


Western blot analysis of MLX Antibody (Center) in MDA-MB231 cell line lysates (35ug/lane). MLX (arrow) was detected using the purified Pab.