

## Product datasheet for **AP18111PU-N**

### MC3R Rabbit Polyclonal Antibody

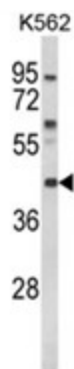
#### Product data:

Product Type:	Primary Antibodies
Applications:	WB
Recommended Dilution:	ELISA: 1/1,000. Western blotting: 1/100 - 1/500.
Reactivity:	Human
Host:	Rabbit
Clonality:	Polyclonal
Immunogen:	KLH conjugated synthetic peptide selected from the Center region of human MC3R
Specificity:	This antibody reacts to MC3-R.
Formulation:	PBS with 0.09% (W/V) sodium azide State: Liquid purified Ig
Concentration:	lot specific
Purification:	Affinity chromatography on Protein A
Conjugation:	Unconjugated
Storage:	Store the antibody undiluted at 2-8°C for one month or (in aliquots) at -20°C for longer. Avoid repeated freezing and thawing.
Stability:	Shelf life: one year from despatch.
Gene Name:	melanocortin 3 receptor
Database Link:	<a href="#">Entrez Gene 4159 Human P41968</a>
Background:	MC3R is a G-protein-coupled receptor for melanocyte-stimulating hormone and adrenocorticotrophic hormone that is expressed in tissues other than the adrenal cortex and melanocytes. This gene maps to the same region as the locus for benign neonatal epilepsy.
Synonyms:	MC3R, Melanocortin receptor 3
Protein Families:	Druggable Genome, GPCR, Transmembrane
Protein Pathways:	Neuroactive ligand-receptor interaction



[View online »](#)

## Product images:



Western blot analysis of MC3R Antibody (Center) in K562 cell line lysates (35ug/lane). MC3R (arrow) was detected using the purified Pab.