

Product datasheet for **AP18104PU-N**

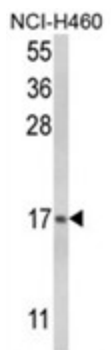
LTC4S (N-term) Rabbit Polyclonal Antibody

Product data:

Product Type:	Primary Antibodies
Applications:	WB
Recommended Dilution:	ELISA: 1/1,000. Western blotting: 1/100 - 1/500.
Reactivity:	Human
Host:	Rabbit
Clonality:	Polyclonal
Immunogen:	KLH conjugated synthetic peptide selected from the N-terminal region of human LTC4S
Specificity:	This antibody reacts to LTC4S.
Formulation:	PBS with 0.09% (W/V) sodium azide State: Liquid purified Ig
Concentration:	lot specific
Purification:	Affinity chromatography on Protein A
Conjugation:	Unconjugated
Storage:	Store the antibody undiluted at 2-8°C for one month or (in aliquots) at -20°C for longer. Avoid repeated freezing and thawing.
Stability:	Shelf life: one year from despatch.
Gene Name:	leukotriene C4 synthase
Database Link:	Entrez Gene 4056 Human Q16873
Background:	LTC4S catalyzes the conjugation of leukotriene A4 with reduced glutathione to form leukotriene C4.
Synonyms:	Leukotriene C4 synthase, Leukotriene-C(4) synthase
Protein Families:	Druggable Genome, Transmembrane
Protein Pathways:	Arachidonic acid metabolism, Metabolic pathways



[View online »](#)

Product images:

Western blot analysis of LTC4S Antibody (N-term) in NCI-H460 cell line lysates (35ug/lane). LTC4S (arrow) was detected using the purified Pab. (2ug/ml)