

## Product datasheet for **AP18103PU-N**

### Leukotriene A4 hydrolase (LTA4H) Rabbit Polyclonal Antibody

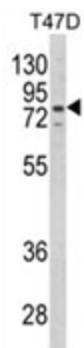
#### Product data:

Product Type:	Primary Antibodies
Applications:	WB
Recommended Dilution:	ELISA: 1/1,000. Western blotting: 1/50 - 1/100.
Reactivity:	Human
Host:	Rabbit
Clonality:	Polyclonal
Immunogen:	KLH conjugated synthetic peptide selected from the Center region of human LTA4H
Specificity:	This antibody reacts to LTA4H.
Formulation:	PBS with 0.09% (W/V) sodium azide State: Liquid purified Ig
Concentration:	lot specific
Purification:	Saturated Ammonium Sulfate (SAS) precipitation
Conjugation:	Unconjugated
Storage:	Store the antibody undiluted at 2-8°C for one month or (in aliquots) at -20°C for longer. Avoid repeated freezing and thawing.
Stability:	Shelf life: one year from despatch.
Gene Name:	leukotriene A4 hydrolase
Database Link:	<a href="#">Entrez Gene 4048 Human P09960</a>
Background:	DHCR24 hydrolyzes an epoxide moiety of leukotriene A4 (LTA-4) to form leukotriene B4 (LTB-4). This enzyme also has some peptidase activity.
Synonyms:	Leukotriene A-4 hydrolase, LTA4, LTA-4 hydrolase
Protein Families:	Druggable Genome, Protease
Protein Pathways:	Arachidonic acid metabolism, Metabolic pathways



[View online »](#)

## Product images:



Western blot analysis of LTA4H Antibody (Center) in T47D cell line lysates (35ug/lane). LTA4H (arrow) was detected using the purified Pab.