

## Product datasheet for **AP18101PU-N**

### Lipin 2 (LPIN2) (Center) Rabbit Polyclonal Antibody

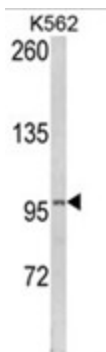
#### Product data:

Product Type:	Primary Antibodies
Applications:	WB
Recommended Dilution:	ELISA: 1/1,000. Western blotting: 1/100 - 1/500.
Reactivity:	Human
Host:	Rabbit
Clonality:	Polyclonal
Immunogen:	KLH conjugated synthetic peptide selected from the Center region of human LPIN2
Specificity:	This antibody reacts to Lipin-2.
Formulation:	PBS with 0.09% (W/V) sodium azide State: Liquid purified Ig
Concentration:	lot specific
Purification:	Affinity chromatography on Protein A
Conjugation:	Unconjugated
Storage:	Store the antibody undiluted at 2-8°C for one month or (in aliquots) at -20°C for longer. Avoid repeated freezing and thawing.
Stability:	Shelf life: one year from despatch.
Gene Name:	lipin 2
Database Link:	<a href="#">Entrez Gene 9663 Human Q92539</a>
Background:	Defects in LPIN2 are the cause of Majeed syndrome. Majeed syndrome is an autosomal recessive disorder combining features of chronic recurrent multifocal osteomyelitis, congenital dyserythropoietic anemia and inflammatory dermatosis.
Synonyms:	Lipin2, LPIN2, KIAA0249



[View online »](#)

## Product images:



Western blot analysis of LPIN2 Antibody (Center) in K562 cell line lysates (35ug/lane).LPIN2 (arrow) was detected using the purified Pab. (2ug/ml)