

## Product datasheet for **AP18099PU-N**

### **LMOD1 Rabbit Polyclonal Antibody**

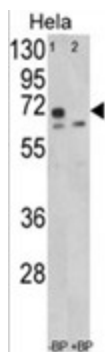
#### **Product data:**

<b>Product Type:</b>	Primary Antibodies
<b>Applications:</b>	WB
<b>Recommended Dilution:</b>	ELISA: 1/1,000. Western blotting: 1/50 - 1/100.
<b>Reactivity:</b>	Human
<b>Host:</b>	Rabbit
<b>Clonality:</b>	Polyclonal
<b>Immunogen:</b>	KLH conjugated synthetic peptide selected from the Center region of human LMOD
<b>Specificity:</b>	This antibody reacts to Leiomodrin-1.
<b>Formulation:</b>	PBS with 0.09% (W/V) sodium azide State: Liquid purified Ig
<b>Concentration:</b>	lot specific
<b>Purification:</b>	Saturated Ammonium Sulfate (SAS) precipitation
<b>Conjugation:</b>	Unconjugated
<b>Storage:</b>	Store the antibody undiluted at 2-8°C for one month or (in aliquots) at -20°C for longer. Avoid repeated freezing and thawing.
<b>Stability:</b>	Shelf life: one year from despatch.
<b>Gene Name:</b>	leiomodrin 1
<b>Database Link:</b>	<a href="#">Entrez Gene 25802 Human P29536</a>
<b>Background:</b>	The leiomodrin 1 protein has a putative membrane-spanning region and 2 types of tandemly repeated blocks.
<b>Synonyms:</b>	LMOD1, Leiomodrin1, Leiomodrin, muscle form, 64 kDa autoantigen D1, 64 kDa autoantigen 1D, 64 kDa autoantigen 1D3, Thyroid-associated ophthalmopathy autoantigen, Smooth muscle leiomodrin, SM-Lmod



[View online »](#)

## Product images:



Western blot analysis of LMOD1 Antibody (Center N201) in HeLa cell line lysates (35ug/lane). LMOD1 (arrow) was detected using the purified Pab.