

Product datasheet for **AP18088PU-N**

NKG2C (KLRC2) (N-term) Rabbit Polyclonal Antibody

Product data:

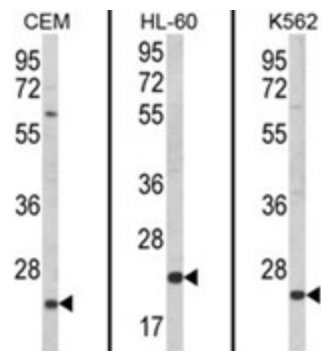
Product Type:	Primary Antibodies
Applications:	ELISA, FC, IHC, WB
Recommended Dilution:	Peptide ELISA: 1/1000. Western Blot: 1/500 - 1/1000 Flow Cytometry: 1/10-1/50 Immunohistochemistry on Paraffin Sections: 1/50-1/100.
Reactivity:	Human
Host:	Rabbit
Clonality:	Polyclonal
Immunogen:	KLH conjugated synthetic peptide between 1-30 amino acids from the N-terminal region of Human KLRC2.
Specificity:	This antibody recognizes Human KLRC2 / CD159c. Other species not tested.
Formulation:	PBS with 0.09% (W/V) Sodium Azide State: Liquid purified Ig fraction
Concentration:	lot specific
Purification:	protein A column, followed by peptide affinity purification
Conjugation:	Unconjugated
Storage:	Store undiluted at 2-8°C for one month or (in aliquots) at -20°C for longer. Avoid repeated freezing and thawing.
Stability:	Shelf life: one year from despatch.
Gene Name:	killer cell lectin like receptor C2
Database Link:	Entrez Gene 3822 Human P26717
Background:	KLRC2 plays a role as a receptor for the recognition of MHC class I HLA-E molecules by NK cells and some cytotoxic T-cells.
Synonyms:	KLRC2, NKG2C, NKG2-C type II integral membrane protein, NKG2-C-activating NK receptor, NK cell receptor C, CD159 antigen-like family member C, CD159c
Protein Families:	Transmembrane



[View online »](#)

Protein Pathways: Antigen processing and presentation, Natural killer cell mediated cytotoxicity

Product images:



Western blot analysis of KLRC2 Antibody (N-term) from left to right in CEM, HL-60, K562 cell line lysates (35ug/lane). KLRC2 (arrow) was detected using the purified Pab.