

Product datasheet for **AP18087PU-N**

NKG2A (KLRC1) (C-term) Rabbit Polyclonal Antibody

Product data:

Product Type:	Primary Antibodies
Applications:	WB
Recommended Dilution:	ELISA: 1/1,000. Western blotting: 1/100 - 1/500.
Reactivity:	Human
Host:	Rabbit
Clonality:	Polyclonal
Immunogen:	KLH conjugated synthetic peptide selected from the C-term region of human KLRC1.
Specificity:	This antibody reacts to KLRC1 / CD159a.
Formulation:	PBS with 0.09% (W/V) sodium azide State: Liquid purified Ig
Concentration:	lot specific
Purification:	Affinity chromatography on Protein A
Conjugation:	Unconjugated
Storage:	Store the antibody undiluted at 2-8°C for one month or (in aliquots) at -20°C for longer. Avoid repeated freezing and thawing.
Stability:	Shelf life: one year from despatch.
Gene Name:	killer cell lectin like receptor C1
Database Link:	Entrez Gene 3821 Human P26715
Background:	Natural killer (NK) cells are lymphocytes that can mediate lysis of certain tumor cells and virus-infected cells without previous activation. They can also regulate specific humoral and cell-mediated immunity. This protein belongs to the killer cell lectin-like receptor family, also called NKG2 family, which is a group of transmembrane proteins preferentially expressed in NK cells. This family of proteins is characterized by the type II membrane orientation and the presence of a C-type lectin domain. This protein forms a complex with another family member, KLRD1/CD94, and has been implicated in the recognition of the MHC class I HLA-E molecules in NK cells.



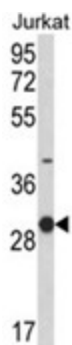
[View online »](#)

Synonyms: KLRC1, NKG2A, NKG2-A/B-activating NK receptor, NK cell receptor A, CD159 antigen-like family member A, CD159a

Protein Families: Transmembrane

Protein Pathways: Antigen processing and presentation, Graft-versus-host disease, Natural killer cell mediated cytotoxicity

Product images:



Western blot analysis of KLRC1 Antibody (C-term) in Jurkat cell line lysates (35ug/lane). KLRC1 (arrow) was detected using the purified Pab.