

Product datasheet for **AP18085PU-N**

KIR3DS1 / NKAT10 (C-term) Rabbit Polyclonal Antibody

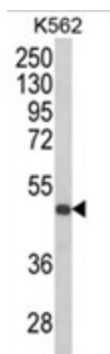
Product data:

Product Type:	Primary Antibodies
Applications:	WB
Recommended Dilution:	ELISA: 1/1,000. Western blotting: 1/100 - 1/500.
Reactivity:	Human
Host:	Rabbit
Clonality:	Polyclonal
Immunogen:	KLH conjugated synthetic peptide selected from the C-terminal region of human KIR3DS1
Specificity:	This antibody reacts to KIR3DS1.
Formulation:	PBS with 0.09% (W/V) sodium azide State: Liquid purified Ig
Concentration:	lot specific
Purification:	Affinity chromatography on Protein A
Conjugation:	Unconjugated
Storage:	Store the antibody undiluted at 2-8°C for one month or (in aliquots) at -20°C for longer. Avoid repeated freezing and thawing.
Stability:	Shelf life: one year from despatch.
Gene Name:	killer cell immunoglobulin like receptor, three Ig domains and short cytoplasmic tail 1
Database Link:	Entrez Gene 3813 Human Q14943
Background:	KIR3DS1 is the receptor on natural killer (NK) cells for HLA-C alleles. It does not inhibit the activity of NK cells.
Synonyms:	CD158E2; KIR-123FM; KIR-G1; MGC119726; MGC119728; MGC125316; NKAT10



[View online »](#)

Product images:



Western blot analysis of KIR3DS1 Antibody (C-term) (AP18085PU-N) in K562 cell line lysates (35ug/lane). KIR3DS1 (arrow) was detected using the purified Pab.