

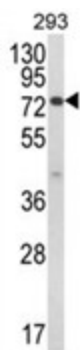
Product datasheet for **AP18082PU-N**

JAKMIP1 Rabbit Polyclonal Antibody

Product data:

| | |
|-----------------------|--|
| Product Type: | Primary Antibodies |
| Applications: | WB |
| Recommended Dilution: | ELISA: 1/1,000. Western blotting: 1/100 - 1/500. |
| Reactivity: | Human |
| Host: | Rabbit |
| Clonality: | Polyclonal |
| Immunogen: | KLH conjugated synthetic peptide selected from the Center region of human JAKMIP1 |
| Specificity: | This antibody reacts to JAKMIP1. |
| Formulation: | PBS with 0.09% (W/V) sodium azide State: Liquid purified Ig |
| Concentration: | lot specific |
| Purification: | Affinity chromatography on Protein A |
| Conjugation: | Unconjugated |
| Storage: | Store the antibody undiluted at 2-8°C for one month or (in aliquots) at -20°C for longer. Avoid repeated freezing and thawing. |
| Stability: | Shelf life: one year from despatch. |
| Gene Name: | janus kinase and microtubule interacting protein 1 |
| Database Link: | Entrez Gene 152789 Human Q96N16 |
| Background: | JAKMIP1 associates with microtubules and may play a role in the microtubule-dependent transport of the GABA-B receptor. It may play a role in JAK1 signaling and regulate microtubule cytoskeleton rearrangements. |
| Synonyms: | GABABRBP, JAMIP1, MARLIN1 |
| Protein Families: | Druggable Genome |


[View online »](#)

Product images:


Western blot analysis of JAKMIP1 Antibody (Center) in 293 cell line lysates (35ug/lane). JAKMIP1 (arrow) was detected using the purified Pab.