

Product datasheet for **AP18080PU-N**

OSCP (ITGBL1) Rabbit Polyclonal Antibody

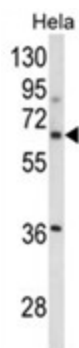
Product data:

Product Type:	Primary Antibodies
Applications:	WB
Recommended Dilution:	ELISA: 1/1,000. Western blotting: 1/100 - 1/500.
Reactivity:	Human
Host:	Rabbit
Clonality:	Polyclonal
Immunogen:	KLH conjugated synthetic peptide selected from the Center region of human ITGBL1
Specificity:	This antibody reacts to ITGBL1.
Formulation:	PBS with 0.09% (W/V) sodium azide State: Liquid purified Ig
Concentration:	lot specific
Purification:	Affinity chromatography on Protein A
Conjugation:	Unconjugated
Storage:	Store the antibody undiluted at 2-8°C for one month or (in aliquots) at -20°C for longer. Avoid repeated freezing and thawing.
Stability:	Shelf life: one year from despatch.
Gene Name:	integrin subunit beta like 1
Database Link:	Entrez Gene 9358 Human O95965
Background:	Osteoblast specific cysteine-rich protein (OSCP) is integrin, β -like 1 (with EGF-like repeat domains).
Synonyms:	Integrin beta-like protein 1, OSCP, TIED



[View online »](#)

Product images:



Western blot analysis of ITGBL1 Antibody (Center) in HeLa cell line lysates (35ug/lane). ITGBL1 (arrow) was detected using the purified Pab.