

## Product datasheet for **AP18064PU-N**

### IFNAR1 Rabbit Polyclonal Antibody

#### Product data:

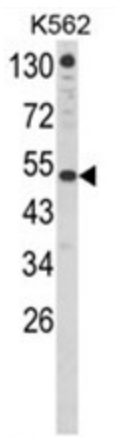
Product Type:	Primary Antibodies
Applications:	WB
Recommended Dilution:	ELISA: 1/1,000. Western blotting: 1/100 - 1/500.
Reactivity:	Human
Host:	Rabbit
Clonality:	Polyclonal
Immunogen:	KLH conjugated synthetic peptide selected from the Center region of human IFNAR1
Specificity:	This antibody reacts to IFNAR1.
Formulation:	PBS with 0.09% (W/V) sodium azide State: Liquid purified Ig
Concentration:	lot specific
Purification:	Affinity chromatography on Protein A
Conjugation:	Unconjugated
Storage:	Store the antibody undiluted at 2-8°C for one month or (in aliquots) at -20°C for longer. Avoid repeated freezing and thawing.
Stability:	Shelf life: one year from despatch.
Gene Name:	interferon alpha and beta receptor subunit 1
Database Link:	<a href="#">Entrez Gene 3454 Human P17181</a>
Background:	IFNAR1 is the receptor for interferons alpha and beta. Binding to type I IFNs triggers tyrosine phosphorylation of a number of proteins including JAKs, TYK2, STAT proteins and IFNR alpha- and beta-subunits themselves.
Synonyms:	IFN-R-1, IFN-alpha Receptor alpha, IFN-alpha/beta receptor 1, Type I interferon receptor 1, CRF2-1
Protein Families:	Druggable Genome, Transmembrane



[View online »](#)

**Protein Pathways:** Cytokine-cytokine receptor interaction, Jak-STAT signaling pathway, Natural killer cell mediated cytotoxicity, Toll-like receptor signaling pathway

**Product images:**



Western blot analysis of IFNAR1 Antibody (Center) in K562 cell line lysates (35ug/lane). IFNAR1 (arrow) was detected using the purified Pab. (8ug/ml)