

Product datasheet for **AP18058PU-N**

HSPA4L (C-term) Rabbit Polyclonal Antibody

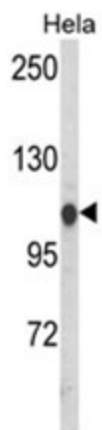
Product data:

Product Type:	Primary Antibodies
Applications:	WB
Recommended Dilution:	ELISA: 1/1,000. Western blotting: 1/100 - 1/500.
Reactivity:	Human
Host:	Rabbit
Clonality:	Polyclonal
Immunogen:	KLH conjugated synthetic peptide selected from the C-term region of human HSPA4L
Specificity:	This antibody reacts to HSPA4L.
Formulation:	PBS with 0.09% (W/V) sodium azide State: Liquid purified Ig
Concentration:	lot specific
Purification:	Affinity chromatography on Protein A
Conjugation:	Unconjugated
Storage:	Store the antibody undiluted at 2-8°C for one month or (in aliquots) at -20°C for longer. Avoid repeated freezing and thawing.
Stability:	Shelf life: one year from despatch.
Gene Name:	heat shock protein family A (Hsp70) member 4 like
Database Link:	Entrez Gene 22824 Human O95757
Background:	Possesses chaperone activity in vitro where it inhibits aggregation of citrate synthase.
Synonyms:	HSP70-4L, Osmotic stress protein 94, Heat shock 70-related protein APG-1, OSP94



[View online »](#)

Product images:



Western blot analysis of HSPA4L Antibody (C-term) in HeLa cell line lysates (35ug/lane). HSPA4L (arrow) was detected using the purified Pab.