

Product datasheet for **AP18054PU-N**

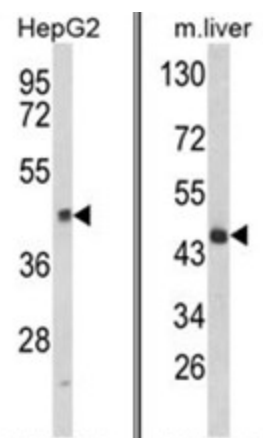
HPD (N-term) Rabbit Polyclonal Antibody

Product data:

Product Type:	Primary Antibodies
Applications:	WB
Recommended Dilution:	ELISA: 1/1,000. Western blotting: 1/100 - 1/500.
Reactivity:	Human, Mouse
Host:	Rabbit
Clonality:	Polyclonal
Immunogen:	KLH conjugated synthetic peptide selected from the N-terminal region of human HPD
Specificity:	This antibody reacts to HPD.
Formulation:	PBS with 0.09% (W/V) sodium azide State: Liquid purified Ig
Concentration:	lot specific
Purification:	Affinity chromatography on Protein A
Conjugation:	Unconjugated
Storage:	Store the antibody undiluted at 2-8°C for one month or (in aliquots) at -20°C for longer. Avoid repeated freezing and thawing.
Stability:	Shelf life: one year from despatch.
Gene Name:	4-hydroxyphenylpyruvate dioxygenase
Database Link:	Entrez Gene 15445 Mouse Entrez Gene 3242 Human P32754
Background:	HPD is an enzyme in the catabolic pathway of tyrosine. This protein catalyzes the conversion of 4-hydroxyphenylpyruvate to homogentisate.
Synonyms:	4HPPD, HPPDase
Protein Families:	Druggable Genome
Protein Pathways:	Metabolic pathways, Phenylalanine metabolism, Tyrosine metabolism, Ubiquinone and other terpenoid-quinone biosynthesis



[View online »](#)

Product images:

(LEFT) Western blot analysis of HPD Antibody (N-term) in HepG2 cell line lysates (35ug/lane). HPD (arrow) was detected using the purified Pab.
(RIGHT) Western blot analysis of HPD Antibody (N-term) in mouse liver tissue lysates (35ug/lane). HPD (arrow) was detected using the purified Pab.