

Product datasheet for **AP18045PU-N**

HEXA Rabbit Polyclonal Antibody

Product data:

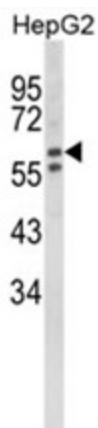
Product Type:	Primary Antibodies
Applications:	WB
Recommended Dilution:	ELISA: 1/1,000. Western blotting: 1/100 - 1/500.
Reactivity:	Human
Host:	Rabbit
Clonality:	Polyclonal
Immunogen:	KLH conjugated synthetic peptide selected from the Center region of human HEXA
Specificity:	This antibody reacts to HEXA.
Formulation:	PBS with 0.09% (W/V) sodium azide State: Liquid purified Ig
Concentration:	lot specific
Purification:	Affinity chromatography on Protein A
Conjugation:	Unconjugated
Storage:	Store the antibody undiluted at 2-8°C for one month or (in aliquots) at -20°C for longer. Avoid repeated freezing and thawing.
Stability:	Shelf life: one year from despatch.
Gene Name:	hexosaminidase subunit alpha
Database Link:	Entrez Gene 3073 Human P06865
Background:	HEXA is the alpha subunit of the lysosomal enzyme beta-hexosaminidase that, together with the cofactor GM2 activator protein, catalyzes the degradation of the ganglioside GM2, and other molecules containing terminal N-acetyl hexosamines. Beta-hexosaminidase is composed of two subunits, alpha and beta, which are encoded by separate genes. Both beta-hexosaminidase alpha and beta subunits are members of family 20 of glycosyl hydrolases.
Synonyms:	beta-N-acetylhexosaminidase; MGC99608; N-acetyl-beta-glucosaminidase; TSD
Protein Families:	Druggable Genome



[View online »](#)

Protein Pathways:

Amino sugar and nucleotide sugar metabolism, Glycosaminoglycan degradation, Glycosphingolipid biosynthesis - ganglio series, Glycosphingolipid biosynthesis - globo series, Lysosome, Metabolic pathways, Other glycan degradation

Product images:

Western blot analysis of HEXA Antibody (Center) in HepG2 cell line lysates (35ug/lane). HEXA (arrow) was detected using the purified Pab.