

Product datasheet for **AP18042PU-N**

GTF2H4 Rabbit Polyclonal Antibody

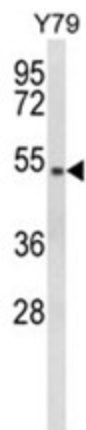
Product data:

Product Type:	Primary Antibodies
Applications:	WB
Recommended Dilution:	ELISA: 1/1,000. Western blotting: 1/100 - 1/500.
Reactivity:	Human
Host:	Rabbit
Clonality:	Polyclonal
Immunogen:	KLH conjugated synthetic peptide selected from the Center region of human GTF2H4
Specificity:	This antibody reacts to GTF2H4.
Formulation:	PBS with 0.09% (W/V) sodium azide State: Liquid purified Ig
Concentration:	lot specific
Purification:	Affinity chromatography on Protein A
Conjugation:	Unconjugated
Storage:	Store the antibody undiluted at 2-8°C for one month or (in aliquots) at -20°C for longer. Avoid repeated freezing and thawing.
Stability:	Shelf life: one year from despatch.
Gene Name:	general transcription factor IIH subunit 4
Database Link:	Entrez Gene 2968 Human Q92759
Background:	Component of the core-TFIID basal transcription factor involved in nucleotide excision repair (NER) of DNA and, when complexed to CAK, in RNA transcription by RNA polymerase II.
Synonyms:	BTF2-p52, TFIID
Protein Families:	Druggable Genome, Transcription Factors
Protein Pathways:	Basal transcription factors, Nucleotide excision repair



[View online »](#)

Product images:



Western blot analysis of GTF2H4 Antibody (Center) in Y79 cell line lysates (35ug/lane). GTF2H4 (arrow) was detected using the purified Pab.