

Product datasheet for **AP18041PU-N**

Glutathione S Transferase alpha 1 (GSTA1) Rabbit Polyclonal Antibody

Product data:

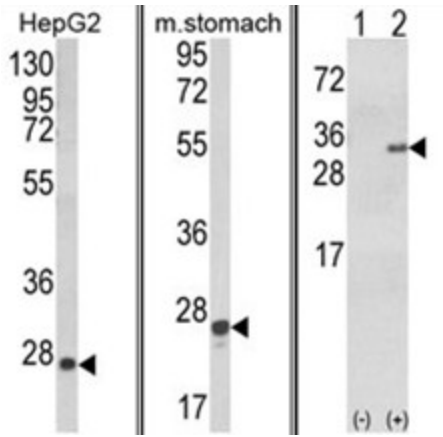
Product Type:	Primary Antibodies
Applications:	WB
Recommended Dilution:	ELISA: 1/1,000. Western blotting: 1/100 - 1/500.
Reactivity:	Human
Host:	Rabbit
Clonality:	Polyclonal
Immunogen:	GSTA1 recombinant protein
Specificity:	This antibody reacts to GSTA1.
Formulation:	PBS with 0.09% (W/V) sodium azide State: Liquid purified Ig
Concentration:	lot specific
Purification:	Affinity chromatography on Protein A
Conjugation:	Unconjugated
Storage:	Store the antibody undiluted at 2-8°C for one month or (in aliquots) at -20°C for longer. Avoid repeated freezing and thawing.
Stability:	Shelf life: one year from despatch.
Gene Name:	glutathione S-transferase alpha 1
Database Link:	Entrez Gene 2938 Human P08263
Background:	Cytosolic and membrane-bound forms of glutathione S-transferase are encoded by two distinct supergene families. These enzymes function in the detoxification of electrophilic compounds, including carcinogens, therapeutic drugs, environmental toxins and products of oxidative stress, by conjugation with glutathione.
Synonyms:	Glutathione S-transferase A1, GSTA1-1, GTH1, GST-epsilon
Protein Families:	Druggable Genome



[View online »](#)

Protein Pathways: Drug metabolism - cytochrome P450, Glutathione metabolism, Metabolism of xenobiotics by cytochrome P450

Product images:



(LEFT) Western blot analysis of GSTA1 Antibody in HepG2 cell line lysates (35ug/lane). GSTA1 (arrow) was detected using the purified Pab. (Middle) Western blot analysis of GSTA1 Antibody in mouse stomach tissue lysates (35ug/lane). GSTA1 (arrow) was detected using the purified Pab. (RIGHT) Western blot analysis of GSTA1 (arrow) using rabbit polyclonal GSTA1 Antibody. 293 cell lysates (2 ug/lane) either nontransfected (Lane 1) or transiently transfected with the GSTA1 gene (Lane 2).