

Product datasheet for **AP18040PU-N**

Gasdermin like (GSDMB) (Center) Rabbit Polyclonal Antibody

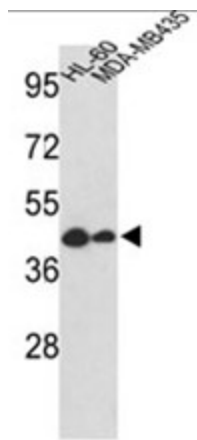
Product data:

Product Type:	Primary Antibodies
Applications:	WB
Recommended Dilution:	ELISA: 1/1,000. Western blotting: 1/100 - 1/500.
Reactivity:	Human
Host:	Rabbit
Clonality:	Polyclonal
Immunogen:	KLH conjugated synthetic peptide selected from the Center region of human GSDMB
Specificity:	This antibody reacts to GSDMB.
Formulation:	PBS with 0.09% (W/V) sodium azide State: Liquid purified Ig
Concentration:	lot specific
Purification:	Affinity chromatography on Protein A
Conjugation:	Unconjugated
Storage:	Store the antibody undiluted at 2-8°C for one month or (in aliquots) at -20°C for longer. Avoid repeated freezing and thawing.
Stability:	Shelf life: one year from despatch.
Gene Name:	gasdermin B
Database Link:	Entrez Gene 55876 Human Q8TAX9
Background:	GSDMB is a protein with 3' exonuclease activity. Enzymes with this activity are involved in DNA replication, repair, and recombination. Similarity to an E. coli protein suggests that this enzyme may be a subunit of DNA polymerase III, which does not have intrinsic exonuclease activity.
Synonyms:	GSDMB, GSDML, PP4052, PRO2521, Gasdermin-like protein



[View online »](#)

Product images:



Western blot analysis of GSDMB Antibody (Center) in HL-60, MDA-MB435 cell line lysates (35ug/lane). GSDMB (arrow) was detected using the purified Pab.