

## Product datasheet for **AP18039PU-N**

### Aspartate Aminotransferase (GOT1) (N-term) Rabbit Polyclonal Antibody

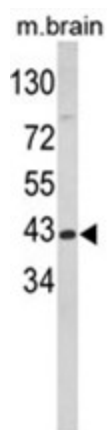
#### Product data:

Product Type:	Primary Antibodies
Applications:	WB
Recommended Dilution:	ELISA: 1/1,000. Western blotting: 1/50 - 1/100.
Reactivity:	Human, Mouse
Host:	Rabbit
Clonality:	Polyclonal
Immunogen:	KLH conjugated synthetic peptide selected from the N-terminal region of human GOT1
Specificity:	This antibody reacts to GOT1.
Formulation:	PBS with 0.09% (W/V) sodium azide State: Liquid purified Ig
Concentration:	lot specific
Purification:	Saturated Ammonium Sulfate (SAS) precipitation
Conjugation:	Unconjugated
Storage:	Store the antibody undiluted at 2-8°C for one month or (in aliquots) at -20°C for longer. Avoid repeated freezing and thawing.
Stability:	Shelf life: one year from despatch.
Gene Name:	glutamic-oxaloacetic transaminase 1
Database Link:	<a href="#">Entrez Gene 14718 Mouse</a> <a href="#">Entrez Gene 2805 Human</a> <a href="#">P17174</a>
Background:	Glutamic-oxaloacetic transaminase is a pyridoxal phosphate-dependent enzyme which exists in cytoplasmic and mitochondrial forms, GOT1 and GOT2, respectively. GOT plays a role in amino acid metabolism and the urea and tricarboxylic acid cycles. The two enzymes are homodimeric and show close homology.
Synonyms:	Aspartate aminotransferase, Transaminase A
Protein Pathways:	Alanine, aspartate and glutamate metabolism, Arginine and proline metabolism, Cysteine and methionine metabolism, Metabolic pathways, Phenylalanine, tyrosine and tryptophan biosynthesis, Phenylalanine metabolism, Tyrosine metabolism



[View online »](#)

## Product images:



Western blot analysis of GOT1 Antibody (N-term) in mouse brain tissue lysates (35ug/lane). GOT1 (arrow) was detected using the purified Pab.