

Product datasheet for **AP18037PU-N**

GMP Synthase (GMPS) (Center) Rabbit Polyclonal Antibody

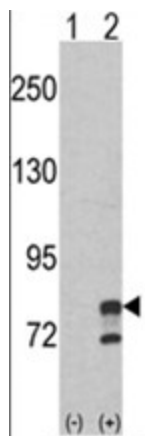
Product data:

Product Type:	Primary Antibodies
Applications:	WB
Recommended Dilution:	ELISA: 1/1,000. Western blotting: 1/50 - 1/100.
Reactivity:	Human
Host:	Rabbit
Clonality:	Polyclonal
Immunogen:	KLH conjugated synthetic peptide selected from the Center region of human GMPS
Specificity:	This antibody reacts to GMPS.
Formulation:	PBS with 0.09% (W/V) sodium azide State: Liquid purified Ig
Concentration:	lot specific
Purification:	Saturated Ammonium Sulfate (SAS) precipitation
Conjugation:	Unconjugated
Storage:	Store the antibody undiluted at 2-8°C for one month or (in aliquots) at -20°C for longer. Avoid repeated freezing and thawing.
Stability:	Shelf life: one year from despatch.
Gene Name:	guanine monophosphate synthase
Database Link:	Entrez Gene 8833 Human P49915
Background:	GMPS is involved in the de novo synthesis of guanine nucleotides which are not only essential for DNA and RNA synthesis, but also provide GTP, which is involved in a number of cellular processes important for cell division.
Synonyms:	Glutamine amidotransferase
Protein Families:	Stem cell - Pluripotency
Protein Pathways:	Drug metabolism - other enzymes, Metabolic pathways, Purine metabolism



[View online »](#)

Product images:



Western blot analysis of GMPS (arrow) using rabbit polyclonal GMPS Antibody (Center). 293 cell lysates (2 ug/lane) either nontransfected (Lane 1) or transiently transfected with the GMPS gene (Lane 2) (Origene Technologies).