

Product datasheet for **AP18034PU-N**

Gastric Inhibitory Polypeptide Receptor (GIPR) (Center) Rabbit Polyclonal Antibody

Product data:

Product Type:	Primary Antibodies
Applications:	WB
Recommended Dilution:	ELISA: 1/1,000. Western blotting: 1/100-1/500.
Reactivity:	Human
Host:	Rabbit
Clonality:	Polyclonal
Immunogen:	KLH conjugated synthetic peptide between 113~142 amino acids from the Center region of Human GIPR.
Specificity:	This antibody recognizes GIPR.
Formulation:	PBS with 0.09% (W/V) Sodium Azide as preservative State: Purified State: Liquid purified Ig fraction
Concentration:	lot specific
Purification:	Affinity Chromatography on Protein A
Conjugation:	Unconjugated
Storage:	Store the antibody undiluted at 2-8°C for one month or (in aliquots) at -20°C for longer. Avoid repeated freezing and thawing.
Stability:	Shelf life: one year from despatch.
Gene Name:	gastric inhibitory polypeptide receptor
Database Link:	Entrez Gene 2696 Human P48546



[View online »](#)

Background:

GIPR also called glucose-dependent insulinotropic polypeptide, is a 42-amino acid polypeptide synthesized by K cells of the duodenum and small intestine. This protein was originally identified as an activity in gut extracts that inhibited gastric acid secretion and gastrin release, but subsequently was demonstrated to stimulate insulin release potently in the presence of elevated glucose. The insulinotropic effect on pancreatic islet beta-cells was then recognized to be the principal physiologic action of GIP. Together with glucagon-like peptide-1, GIP is largely responsible for the secretion of insulin after eating. The protein is involved in several other facets of the anabolic response.

Synonyms:

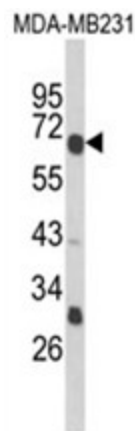
Gastric inhibitory polypeptide receptor, GIP-R

Protein Families:

Druggable Genome, GPCR, Transmembrane

Protein Pathways:

Neuroactive ligand-receptor interaction

Product images:

Western blot analysis of GIPR Antibody (Center) in MDA-MB231 cell line lysates (35ug/lane). GIPR (arrow) was detected using the purified Pab.