

Product datasheet for **AP18033PU-N**

GDNF (N-term) Rabbit Polyclonal Antibody

Product data:

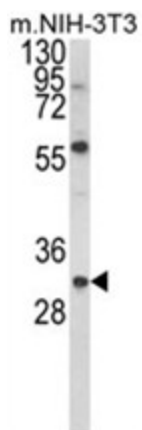
Product Type:	Primary Antibodies
Applications:	WB
Recommended Dilution:	ELISA: 1/1,000. Western blotting: 1/100 - 1/500.
Reactivity:	Human, Mouse
Host:	Rabbit
Clonality:	Polyclonal
Immunogen:	KLH conjugated synthetic peptide selected from the N-terminal region of human GDNF
Specificity:	This antibody reacts to GDNF.
Formulation:	PBS with 0.09% (W/V) sodium azide State: Liquid purified Ig
Concentration:	lot specific
Purification:	Affinity chromatography on Protein A
Conjugation:	Unconjugated
Storage:	Store the antibody undiluted at 2-8°C for one month or (in aliquots) at -20°C for longer. Avoid repeated freezing and thawing.
Stability:	Shelf life: one year from despatch.
Gene Name:	glial cell derived neurotrophic factor
Database Link:	Entrez Gene 14573 Mouse Entrez Gene 2668 Human P39905
Background:	GDNF is a highly conserved neurotrophic factor. The recombinant form of this protein was shown to promote the survival and differentiation of dopaminergic neurons in culture, and was able to prevent apoptosis of motor neurons induced by axotomy. This protein is processed to a mature secreted form that exists as a homodimer. The mature form of the protein is a ligand for the product of the RET (rearranged during transfection) protooncogene. In addition to the transcript encoding GDNF, two additional alternative transcripts encoding distinct proteins, referred to as astrocyte-derived trophic factors, have also been described.
Synonyms:	Glial cell line-derived neurotrophic factor, Astrocyte-derived trophic factor, ATF



[View online »](#)

Protein Families: Druggable Genome, Secreted Protein, Transmembrane

Product images:



Western blot analysis of GDNF Antibody (N-term) in NIH-3T3 cell line lysates (35ug/lane). GDNF (arrow) was detected using the purified Pab.