

Product datasheet for **AP18032PU-N**

GDF10 (Center) Rabbit Polyclonal Antibody

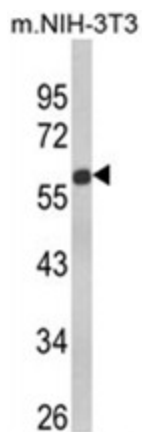
Product data:

Product Type:	Primary Antibodies
Applications:	WB
Recommended Dilution:	ELISA: 1/1,000. Western blotting: 1/100 - 1/500.
Reactivity:	Human, Mouse
Host:	Rabbit
Clonality:	Polyclonal
Immunogen:	KLH conjugated synthetic peptide selected from the Center region of human GDF10
Specificity:	This antibody reacts to BMP3B.
Formulation:	PBS with 0.09% (W/V) sodium azide State: Liquid purified Ig
Concentration:	lot specific
Purification:	Affinity chromatography on Protein A
Conjugation:	Unconjugated
Storage:	Store the antibody undiluted at 2-8°C for one month or (in aliquots) at -20°C for longer. Avoid repeated freezing and thawing.
Stability:	Shelf life: one year from despatch.
Gene Name:	growth differentiation factor 10
Database Link:	Entrez Gene 2662 Human P55107
Background:	GDF10 is a member of the bone morphogenetic protein (BMP) family and the TGF-beta superfamily. This group of proteins is characterized by a polybasic proteolytic processing site which is cleaved to produce a mature protein containing seven conserved cysteine residues. The members of this family are regulators of cell growth and differentiation in both embryonic and adult tissues. Studies in mice suggest that the protein encoded by this gene plays a role in skeletal morphogenesis.
Synonyms:	Bone morphogenetic protein 3b, Bone-inducing protein, BIP, GDF-10



[View online »](#)

Product images:



Western blot analysis of GDF10 Antibody (Center) in NIH-3T3 cell line lysates (35ug/lane). GDF10 (arrow) was detected using the purified Pab.