

Product datasheet for **AP18025PU-N**

FPR3 Rabbit Polyclonal Antibody

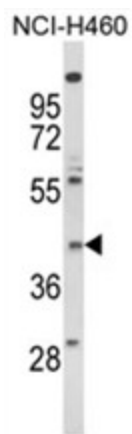
Product data:

| | |
|-----------------------|---|
| Product Type: | Primary Antibodies |
| Applications: | WB |
| Recommended Dilution: | ELISA: 1/1,000. Western blotting: 1/100 - 1/500. |
| Reactivity: | Human |
| Host: | Rabbit |
| Clonality: | Polyclonal |
| Immunogen: | KLH conjugated synthetic peptide selected from the Center region of human FPRL2 |
| Specificity: | This antibody reacts to FPRL2. |
| Formulation: | PBS with 0.09% (W/V) sodium azide State: Liquid purified Ig |
| Concentration: | lot specific |
| Purification: | Affinity chromatography on Protein A |
| Conjugation: | Unconjugated |
| Storage: | Store the antibody undiluted at 2-8°C for one month or (in aliquots) at -20°C for longer. Avoid repeated freezing and thawing. |
| Stability: | Shelf life: one year from despatch. |
| Gene Name: | formyl peptide receptor 3 |
| Database Link: | Entrez Gene 2359 Human P25089 |
| Background: | Low affinity receptor for N-formyl-methionyl peptides, which are powerful neutrophils chemotactic factors. Binding of FMLP to the receptor causes activation of neutrophils. This response is mediated via a G-protein that activates a phosphatidylinositol-calcium second messenger system. |
| Synonyms: | N-formyl peptide receptor 3, Formyl peptide receptor-like 2, FPR3, FPRH1, FPRL2, FMLP-R-II |
| Protein Families: | Druggable Genome, GPCR, Transmembrane |
| Protein Pathways: | Neuroactive ligand-receptor interaction |



[View online »](#)

Product images:



Western blot analysis of FPR2 Antibody (Center) in NCI-H460 cell line lysates (35ug/lane). FPR2 (arrow) was detected using the purified Pab.