

## Product datasheet for **AP18021PU-N**

### FLCN Rabbit Polyclonal Antibody

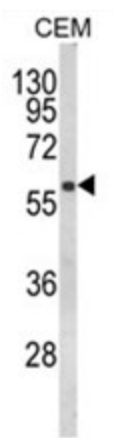
#### Product data:

Product Type:	Primary Antibodies
Applications:	WB
Recommended Dilution:	ELISA: 1/1,000. Western blotting: 1/100 - 1/500.
Reactivity:	Human
Host:	Rabbit
Clonality:	Polyclonal
Immunogen:	KLH conjugated synthetic peptide selected from the Center region of human FLCN
Specificity:	This antibody reacts to FLCN.
Formulation:	PBS with 0.09% (W/V) sodium azide State: Liquid purified Ig
Concentration:	lot specific
Purification:	Affinity chromatography on Protein A
Conjugation:	Unconjugated
Storage:	Store the antibody undiluted at 2-8°C for one month or (in aliquots) at -20°C for longer. Avoid repeated freezing and thawing.
Stability:	Shelf life: one year from despatch.
Gene Name:	folliculin
Database Link:	<a href="#">Entrez Gene 201163 Human</a> <a href="#">Q8NFG4</a>
Background:	FLCN may play a role in the pathogenesis of an uncommon form of kidney cancer through its association with an inherited disorder of the hair follicle (fibrofolliculomas). FLCN may be a tumor suppressor. May be involved in colorectal tumorigenesis. It may be involved in energy and/or nutrient sensing through the AMPK and mTOR signaling pathways.
Synonyms:	FLCN, BHD
Protein Families:	Druggable Genome
Protein Pathways:	Renal cell carcinoma



[View online »](#)

## Product images:



Western blot analysis of FLCN Antibody (Center) in CEM cell line lysates (35ug/lane). FLCN (arrow) was detected using the purified Pab.