

## Product datasheet for **AP18019PU-N**

### **FKBP11 (C-term) Rabbit Polyclonal Antibody**

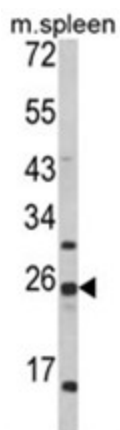
#### **Product data:**

<b>Product Type:</b>	Primary Antibodies
<b>Applications:</b>	WB
<b>Recommended Dilution:</b>	ELISA: 1/1,000. Western blotting: 1/100 - 1/500.
<b>Reactivity:</b>	Human, Mouse
<b>Host:</b>	Rabbit
<b>Clonality:</b>	Polyclonal
<b>Immunogen:</b>	KLH conjugated synthetic peptide selected from the C-terminal region of human FKBP11
<b>Specificity:</b>	This antibody reacts to FKBP11.
<b>Formulation:</b>	PBS with 0.09% (W/V) sodium azide State: Liquid purified Ig
<b>Concentration:</b>	lot specific
<b>Purification:</b>	Affinity chromatography on Protein A
<b>Conjugation:</b>	Unconjugated
<b>Storage:</b>	Store the antibody undiluted at 2-8°C for one month or (in aliquots) at -20°C for longer. Avoid repeated freezing and thawing.
<b>Stability:</b>	Shelf life: one year from despatch.
<b>Gene Name:</b>	FK506 binding protein 11
<b>Database Link:</b>	<a href="#">Entrez Gene 66120 Mouse</a> <a href="#">Entrez Gene 51303 Human</a> <a href="#">Q9NYL4</a>
<b>Background:</b>	FKBP11 belongs to the FKBP family of peptidyl-prolyl cis/trans isomerases, which catalyze the folding of proline-containing polypeptides. The peptidyl-prolyl isomerase activity of FKBP proteins is inhibited by the immunosuppressant compounds FK506 and rapamycin.
<b>Synonyms:</b>	FK506-binding protein 11, PPlase FKBP11, Rotamase
<b>Protein Families:</b>	Druggable Genome, Transmembrane



[View online »](#)

## Product images:



Western blot analysis of FKBP11 Antibody (C-term) in mouse spleen tissue lysates (35ug/lane). FKBP11 (arrow) was detected using the purified Pab.