

Product datasheet for **AP18010PU-N**

Espin (ESPN) (N-term) Rabbit Polyclonal Antibody

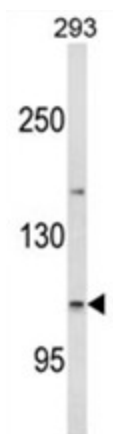
Product data:

Product Type:	Primary Antibodies
Applications:	WB
Recommended Dilution:	ELISA: 1/1,000. Western blotting: 1/100 - 1/500.
Reactivity:	Human
Host:	Rabbit
Clonality:	Polyclonal
Immunogen:	KLH conjugated synthetic peptide selected from the N-terminal region of human ESPN
Specificity:	This antibody reacts to ESPN.
Formulation:	PBS with 0.09% (W/V) sodium azide State: Liquid purified Ig
Concentration:	lot specific
Purification:	Affinity chromatography on Protein A
Conjugation:	Unconjugated
Storage:	Store the antibody undiluted at 2-8°C for one month or (in aliquots) at -20°C for longer. Avoid repeated freezing and thawing.
Stability:	Shelf life: one year from despatch.
Gene Name:	espin
Database Link:	Entrez Gene 83715 Human B1AK53
Background:	ESPN is a multifunctional actin-bundling protein. It plays a major role in regulating the organization, dimensions, dynamics, and signaling capacities of the actin filament-rich, microvillus-type specializations that mediate sensory transduction in various mechanosensory and chemosensory cells.
Synonyms:	ESPN, DFNB36, LP2654



[View online »](#)

Product images:



Western blot analysis of ESPN Antibody (N-term) in 293 cell line lysates (35ug/lane). ESPN (arrow) was detected using the purified Pab.