

## Product datasheet for **AP18003PU-N**

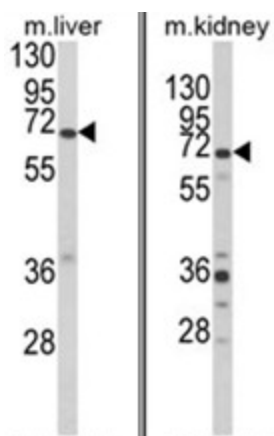
### **EHHADH (C-term) Rabbit Polyclonal Antibody**

#### **Product data:**

<b>Product Type:</b>	Primary Antibodies
<b>Applications:</b>	WB
<b>Recommended Dilution:</b>	ELISA: 1/1,000. Western blotting: 1/100 - 1/500.
<b>Reactivity:</b>	Human, Mouse
<b>Host:</b>	Rabbit
<b>Clonality:</b>	Polyclonal
<b>Immunogen:</b>	KLH conjugated synthetic peptide selected from the C-term region of human EHHADH
<b>Specificity:</b>	This antibody reacts to EHHADH.
<b>Formulation:</b>	PBS with 0.09% (W/V) sodium azide State: Liquid purified Ig
<b>Concentration:</b>	lot specific
<b>Purification:</b>	Affinity chromatography on Protein A
<b>Conjugation:</b>	Unconjugated
<b>Storage:</b>	Store the antibody undiluted at 2-8°C for one month or (in aliquots) at -20°C for longer. Avoid repeated freezing and thawing.
<b>Stability:</b>	Shelf life: one year from despatch.
<b>Gene Name:</b>	enoyl-CoA, hydratase/3-hydroxyacyl CoA dehydrogenase
<b>Database Link:</b>	<a href="#">Entrez Gene 1962 Human Q08426</a>
<b>Background:</b>	EHHADH is a bifunctional enzyme and is one of the four enzymes of the peroxisomal beta-oxidation pathway. The N-terminal region of the encoded protein contains enoyl-CoA hydratase activity while the C-terminal region contains 3-hydroxyacyl-CoA dehydrogenase activity.
<b>Synonyms:</b>	Peroxisomal bifunctional enzyme, PBFE, ECHD
<b>Protein Pathways:</b>	beta-Alanine metabolism, Butanoate metabolism, Fatty acid metabolism, Limonene and pinene degradation, Lysine degradation, Metabolic pathways, PPAR signaling pathway, Propanoate metabolism, Tryptophan metabolism, Valine, leucine and isoleucine degradation



[View online »](#)

**Product images:**

(LEFT) Western blot analysis of EHHADH Antibody (C-term) in mouse liver tissue lysates (35ug/lane). EHHADH (arrow) was detected using the purified Pab. (RIGHT) Western blot analysis of EHHADH Antibody (C-term) in mouse kidney tissue lysates (35ug/lane). EHHADH (arrow) was detected using the purified Pab.