

## Product datasheet for **AP17997PU-N**

### **ECE1 Rabbit Polyclonal Antibody**

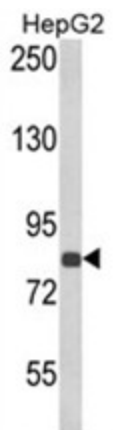
#### **Product data:**

<b>Product Type:</b>	Primary Antibodies
<b>Applications:</b>	WB
<b>Recommended Dilution:</b>	ELISA: 1/1,000. Western blotting: 1/100 - 1/500.
<b>Reactivity:</b>	Human
<b>Host:</b>	Rabbit
<b>Clonality:</b>	Polyclonal
<b>Immunogen:</b>	KLH conjugated synthetic peptide selected from the Center region of human ECE1
<b>Specificity:</b>	This antibody reacts to ECE-1.
<b>Formulation:</b>	PBS with 0.09% (W/V) sodium azide State: Liquid purified Ig
<b>Concentration:</b>	lot specific
<b>Purification:</b>	Affinity chromatography on Protein A
<b>Conjugation:</b>	Unconjugated
<b>Storage:</b>	Store the antibody undiluted at 2-8°C for one month or (in aliquots) at -20°C for longer. Avoid repeated freezing and thawing.
<b>Stability:</b>	Shelf life: one year from despatch.
<b>Gene Name:</b>	endothelin converting enzyme 1
<b>Database Link:</b>	<a href="#">Entrez Gene 1889 Human P42892</a>
<b>Background:</b>	ECE-1 is involved in proteolytic processing of endothelin precursors to biologically active peptides.
<b>Synonyms:</b>	ECE1, ECE
<b>Protein Families:</b>	Druggable Genome, Protease, Transmembrane



[View online »](#)

## Product images:



Western blot analysis of ECE1 Antibody (Center) in HepG2 cell line lysates (35ug/lane). ECE1 (arrow) was detected using the purified Pab.