

## Product datasheet for **AP17996PU-N**

### Desmocollin 1 (DSC1) (C-term) Rabbit Polyclonal Antibody

#### Product data:

Product Type:	Primary Antibodies
Applications:	FC, IHC, WB
Recommended Dilution:	ELISA: 1/1,000. Western blotting: 1/1000. IHC: 1:50-100 Flow Cytometry: 1:10-50
Reactivity:	Human
Host:	Rabbit
Clonality:	Polyclonal
Immunogen:	KLH conjugated synthetic peptide selected from 659-687 aa of the C-terminal region of human DSC1
Specificity:	This antibody reacts to DSC1.
Formulation:	PBS with 0.09% (W/V) sodium azide State: Liquid purified Ig
Concentration:	lot specific
Purification:	Affinity chromatography on Protein A
Conjugation:	Unconjugated
Storage:	Store the antibody undiluted at 2-8°C for one month or (in aliquots) at -20°C for longer. Avoid repeated freezing and thawing.
Stability:	Shelf life: one year from despatch.
Predicted Protein Size:	99987 Da.
Gene Name:	desmocollin 1
Database Link:	<a href="#">Entrez Gene 1823 Human Q08554</a>



[View online »](#)

**Background:**

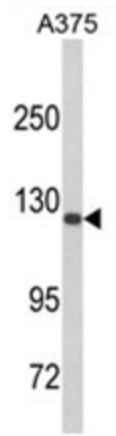
DSC1 is a calcium-dependent glycoprotein that is a member of the desmocollin subfamily of the cadherin superfamily. These desmosomal family members, along with the desmogleins, are found primarily in epithelial cells where they constitute the adhesive proteins of the desmosome cell-cell junction and are required for cell adhesion and desmosome formation. The desmosomal family members are arranged in two clusters on chromosome 18, occupying less than 650 kb combined.

**Synonyms:**

DG2/DG3, DSC1, CDHF1

**Protein Families:**

Transmembrane

**Product images:**

Western blot analysis of DSC1 Antibody (C-term) in A375 cell line lysates (35ug/lane). DSC1 (arrow) was detected using the purified Pab.