

Product datasheet for **AP17995PU-N**

Dopamine Receptor D4 (DRD4) (Center) Rabbit Polyclonal Antibody

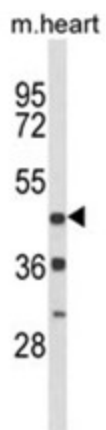
Product data:

| | |
|-----------------------|--|
| Product Type: | Primary Antibodies |
| Applications: | WB |
| Recommended Dilution: | ELISA: 1/1,000. Western blotting: 1/100 - 1/500. |
| Reactivity: | Human, Mouse |
| Host: | Rabbit |
| Clonality: | Polyclonal |
| Immunogen: | KLH conjugated synthetic peptide selected from the Center region of human DRD4 |
| Specificity: | This antibody reacts to Dopamine D4 Receptor. |
| Formulation: | PBS with 0.09% (W/V) sodium azide State: Liquid purified Ig |
| Concentration: | lot specific |
| Purification: | Affinity chromatography on Protein A |
| Conjugation: | Unconjugated |
| Storage: | Store the antibody undiluted at 2-8°C for one month or (in aliquots) at -20°C for longer. Avoid repeated freezing and thawing. |
| Stability: | Shelf life: one year from despatch. |
| Gene Name: | dopamine receptor D4 |
| Database Link: | Entrez Gene 13491 Mouse Entrez Gene 1815 Human P21917 |
| Background: | DRD4 is the D4 subtype of the dopamine receptor. The D4 subtype is a G-protein coupled receptor which inhibits adenylyl cyclase. It is a target for drugs which treat schizophrenia and Parkinson disease. |
| Synonyms: | DRD4, D(2C) dopamine receptor |
| Protein Families: | Druggable Genome, GPCR, Transmembrane |
| Protein Pathways: | Neuroactive ligand-receptor interaction |



[View online »](#)

Product images:



Western blot analysis of DRD4 Antibody (Center) in mouse heart tissue lysates (35ug/lane). DRD4 (arrow) was detected using the purified Pab.