

## Product datasheet for **AP17992PU-N**

### DOLK Rabbit Polyclonal Antibody

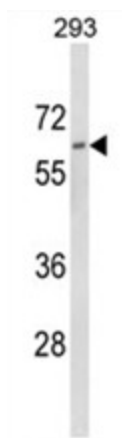
#### Product data:

Product Type:	Primary Antibodies
Applications:	FC, IHC, WB
Recommended Dilution:	ELISA: 1/1,000. Western blotting: 1/100 - 1/500. Flow Cytometry: 1/10-1/50. Immunohistochemistry: 1/50-1/100.
Reactivity:	Human
Host:	Rabbit
Clonality:	Polyclonal
Immunogen:	KLH conjugated synthetic peptide selected between 318~348 amino acids from the Center region of human DOLK.
Specificity:	This antibody reacts to DOLK.
Formulation:	PBS with 0.09% (W/V) sodium azide State: Liquid purified Ig
Concentration:	lot specific
Purification:	Affinity chromatography on Protein A
Conjugation:	Unconjugated
Storage:	Store the antibody undiluted at 2-8°C for one month or (in aliquots) at -20°C for longer. Avoid repeated freezing and thawing.
Stability:	Shelf life: one year from despatch.
Gene Name:	dolichol kinase
Database Link:	<a href="#">Entrez Gene 22845 Human Q9UPQ8</a>
Background:	DOLK is involved in the synthesis of the sugar donor Dol-P-Man which is required in the synthesis of N-linked and O-linked oligosaccharides and for that of GPI anchors (By similarity).
Synonyms:	DOLK, KIAA1094, TMEM15
Protein Families:	Transmembrane



[View online »](#)

## Product images:



Western blot analysis of DOLK Antibody (Center) in 293 cell line lysates (35ug/lane). DOLK (arrow) was detected using the purified Pab.