

## Product datasheet for **AP17989PU-N**

### DIO2 (Center) Rabbit Polyclonal Antibody

#### Product data:

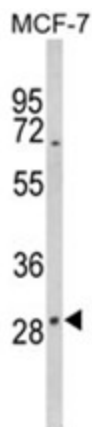
Product Type:	Primary Antibodies
Applications:	IHC, WB
Recommended Dilution:	ELISA: 1/1,000. Western blotting: 1/100-1/500. Immunohistochemistry: 1/50-1/100.
Reactivity:	Human
Host:	Rabbit
Isotype:	Ig
Clonality:	Polyclonal
Immunogen:	KLH conjugated synthetic peptide between 171~200 amino acids from the Center region of Human DIO2
Specificity:	This antibody recognizes DIO2.
Formulation:	PBS with 0.09% (W/V) Sodium Azide State: Purified State: Liquid purified Ig fraction
Concentration:	lot specific
Purification:	Protein A Chromatography followed by peptide affinity purification.
Conjugation:	Unconjugated
Storage:	Store the antibody undiluted at 2-8°C for one month or (in aliquots) at -20°C for longer. Avoid repeated freezing and thawing.
Stability:	Shelf life: one year from despatch.
Gene Name:	deiodinase, iodothyronine, type II
Database Link:	<a href="#">Entrez Gene 1734 Human Q92813</a>
Background:	DIO2 belongs to the iodothyronine deiodinase family. It activates thyroid hormone by converting the prohormone thyroxine (T4) by outer ring deiodination (ORD) to bioactive 3,3',5-triiodothyronine (T3).
Synonyms:	DIOII, ITDI2, TXDI2



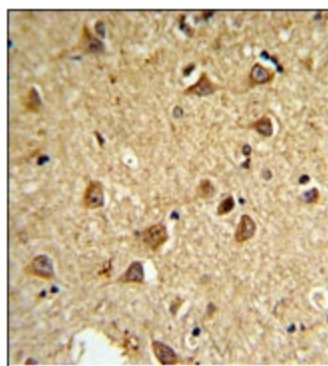
[View online »](#)

Protein Families: Druggable Genome

### Product images:



Western blot analysis of DIO2 Antibody (Center) in MCF-7 cell line lysates (35ug/lane). DIO2 (arrow) was detected using the purified Pab.



DIO2 Antibody staining of Formalin Fixed and Paraffin Embedded Mouse brain followed by peroxidase conjugation of the secondary antibody and DAB staining. This data demonstrates the use of the mouse DIO2 Antibody (Center) for immunohistochemistry. Clinical relevance has not been evaluated.