

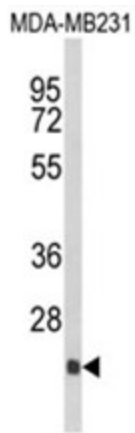
## Product datasheet for **AP17988PU-N**

### DERL2 (C-term) Rabbit Polyclonal Antibody

#### Product data:

Product Type:	Primary Antibodies
Applications:	WB
Recommended Dilution:	ELISA: 1/1,000. Western blotting: 1/100 - 1/500.
Reactivity:	Human
Host:	Rabbit
Clonality:	Polyclonal
Immunogen:	KLH conjugated synthetic peptide selected from the C-terminal region of human DERL2
Specificity:	This antibody reacts to DERL2.
Formulation:	PBS with 0.09% (W/V) sodium azide State: Liquid purified Ig
Concentration:	lot specific
Purification:	Affinity chromatography on Protein A
Conjugation:	Unconjugated
Storage:	Store the antibody undiluted at 2-8°C for one month or (in aliquots) at -20°C for longer. Avoid repeated freezing and thawing.
Stability:	Shelf life: one year from despatch.
Gene Name:	derlin 2
Database Link:	<a href="#">Entrez Gene 51009 Human</a> <a href="#">Q9GZP9</a>
Background:	Proteins that are unfolded or misfolded in the endoplasmic reticulum (ER) must be refolded or degraded to maintain the homeostasis of the ER. DERL2 is involved in the degradation of misfolded glycoproteins in the ER.
Synonyms:	Der1-like protein 2, DERL2, DER2, FLANA, CGI-101, SBBI53, F-LAN-1, F-LANa
Protein Families:	Transmembrane

[View online »](#)

**Product images:**


Western blot analysis of DERL2 Antibody (C-term) in MDA-MB231 cell line lysates (35ug/lane). DERL2 (arrow) was detected using the purified Pab.