

## Product datasheet for **AP17987PU-N**

### **DERL1 (C-term) Rabbit Polyclonal Antibody**

#### **Product data:**

Product Type:	Primary Antibodies
Applications:	FC, IHC, WB
Recommended Dilution:	<b>ELISA:</b> 1/1,000. <b>Western blotting:</b> 1/100-1/500. <b>Flow Cytometry:</b> 1/10-1/50. Immunohistochemistry on Paraffin Sections: 1:50~100
Reactivity:	Human, Mouse
Host:	Rabbit
Clonality:	Polyclonal
Immunogen:	KLH conjugated synthetic peptide between 222~251 amino acids from the C-term region of Human Derlin-1
Specificity:	This antibody recognizes Human and Mouse Derlin-1 at C-term. Other species not tested.
Formulation:	PBS containing 0.09% (W/V) Sodium Azide as preservative State: Liquid purified Ig fraction
Concentration:	lot specific
Purification:	Protein A column, followed by peptide affinity purification
Conjugation:	Unconjugated
Storage:	Store undiluted at 2-8°C for one month or (in aliquots) at -20°C for longer. Avoid repeated freezing and thawing.
Stability:	Shelf life: one year from despatch.
Gene Name:	derlin 1
Database Link:	<a href="#">Entrez Gene 79139 Human</a> <a href="#">Q9BUN8</a>



[View online »](#)

**Background:**

Functional component of endoplasmic reticulum-associated degradation (ERAD) for misfolded luminal proteins. DERL1 may act by forming a channel that allows the retrotranslocation of misfolded proteins into the cytosol where they are ubiquitinated and degraded by the proteasome. It may mediate the interaction between VCP and the degradation substrate. In case of infection by cytomegaloviruses, it plays a central role in the export from the ER and subsequent degradation of MHC class I heavy chains via its interaction with US11 viral protein, which recognizes and associates with MHC class I heavy chains. Also participates in the degradation process of misfolded cytomegalovirus US2 protein.

**Synonyms:**

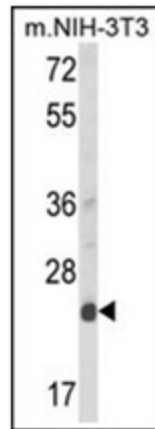
Der1-like protein 1, DERL1, DER1, DERtrin-1

**Protein Families:**

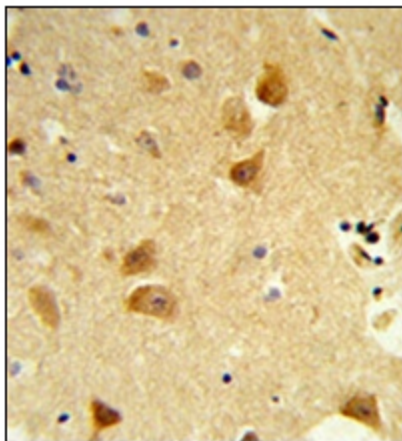
Druggable Genome, Transmembrane

**Protein Pathways:**

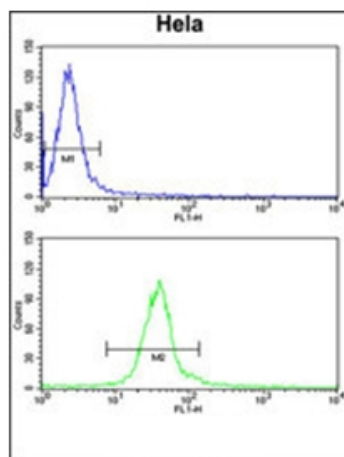
Amyotrophic lateral sclerosis (ALS)

**Product images:**


Western blot analysis of DERL1 Antibody (C-term) in NIH-3T3 cell line lysates (35ug/lane).



Formalin-fixed and paraffin-embedded human brain tissue reacted with DERL1 Antibody (C-term), which was peroxidase-conjugated to the secondary antibody, followed by DAB staining.



Flow cytometry analysis of HeLa cells using DERL1 Antibody (C-term) (bottom histogram) compared to a negative control cell (top histogram). FITC-conjugated goat-anti-rabbit secondary antibodies were used for the analysis.