

Product datasheet for **AP17986PU-N**

DERA (N-term) Rabbit Polyclonal Antibody

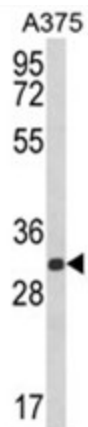
Product data:

Product Type:	Primary Antibodies
Applications:	WB
Recommended Dilution:	ELISA: 1/1,000. Western blotting: 1/100 - 1/500.
Reactivity:	Human
Host:	Rabbit
Clonality:	Polyclonal
Immunogen:	KLH conjugated synthetic peptide selected from the N-term region of human DERA
Specificity:	This antibody reacts to DERA.
Formulation:	PBS with 0.09% (W/V) sodium azide State: Liquid purified Ig
Concentration:	lot specific
Purification:	Affinity chromatography on Protein A
Conjugation:	Unconjugated
Storage:	Store the antibody undiluted at 2-8°C for one month or (in aliquots) at -20°C for longer. Avoid repeated freezing and thawing.
Stability:	Shelf life: one year from despatch.
Gene Name:	deoxyribose-phosphate aldolase
Database Link:	Entrez Gene 51071 Human Q9Y315
Background:	DERA belongs to the deoC/fbaB aldolase family.
Synonyms:	Phosphodeoxyriboaldolase, Deoxyriboaldolase, deoxyribose-phosphate aldolase, CGI-26
Protein Families:	Druggable Genome
Protein Pathways:	Pentose phosphate pathway



[View online »](#)

Product images:



Western blot analysis of DERA Antibody (N-term) in A375 cell line lysates (35ug/lane).DERA (arrow) was detected using the purified Pab.