

Product datasheet for **AP17984PU-N**

TRP2 (DCT) (N-term) Rabbit Polyclonal Antibody

Product data:

Product Type:	Primary Antibodies
Applications:	IHC, WB
Recommended Dilution:	ELISA: 1/1,000. Western blotting: 1/1,000. Immunohistochemistry on Paraffin Sections: 1/10-1/50.
Reactivity:	Human
Host:	Rabbit
Isotype:	Ig
Clonality:	Polyclonal
Immunogen:	KLH conjugated synthetic peptide between 62-89 amino acids from the N-terminal region of human DCT.
Specificity:	This antibody recognizes Human TYRP2. Other species not tested.
Formulation:	PBS with 0.09% (W/V) sodium azide State: Purified State: Liquid purified Ig
Concentration:	lot specific
Purification:	Protein A column, followed by peptide affinity purification.
Conjugation:	Unconjugated
Storage:	Store undiluted at 2-8°C for one month or (in aliquots) at -20°C for longer. Avoid repeated freezing and thawing.
Stability:	Shelf life: one year from despatch.
Gene Name:	dopachrome tautomerase
Database Link:	Entrez Gene 1638 Human P40126
Background:	This protein, belonging to the tyrosinase family, is involved in melanin biosynthesis through regulation of eumelanin and pheomelanin levels.
Synonyms:	Tyrosinase-related protein 2, TRP2, TRP-2, L-dopachrome tautomerase

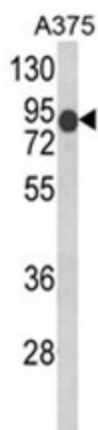


[View online »](#)

Protein Families: Transmembrane

Protein Pathways: Melanogenesis, Metabolic pathways, Tyrosine metabolism

Product images:



Western blot analysis of DCT Antibody (N-term) in A375 cell line lysates (35ug/lane). DCT (arrow) was detected using the purified Pab.