

Product datasheet for **AP17983PU-N**

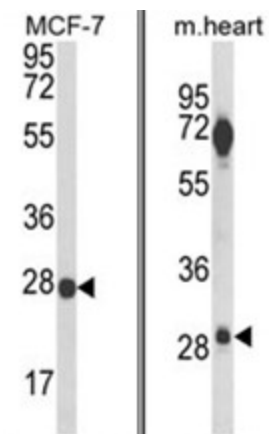
DCI (EC11) (C-term) Rabbit Polyclonal Antibody

Product data:

Product Type:	Primary Antibodies
Applications:	WB
Recommended Dilution:	ELISA: 1/1,000. Western blotting: 1/100 - 1/500.
Reactivity:	Human, Mouse
Host:	Rabbit
Clonality:	Polyclonal
Immunogen:	conjugated synthetic peptide selected from the C-term region of human DCI
Specificity:	This antibody reacts to DCI.
Formulation:	PBS with 0.09% (W/V) sodium azide State: Liquid purified Ig
Concentration:	lot specific
Purification:	Affinity chromatography on Protein A
Conjugation:	Unconjugated
Storage:	Store the antibody undiluted at 2-8°C for one month or (in aliquots) at -20°C for longer. Avoid repeated freezing and thawing.
Stability:	Shelf life: one year from despatch.
Gene Name:	enoyl-CoA delta isomerase 1
Database Link:	Entrez Gene 13177 Mouse Entrez Gene 1632 Human P42126
Background:	DCI is a member of the hydratase/isomerase superfamily. The protein encoded is a key mitochondrial enzyme involved in beta-oxidation of unsaturated fatty acids. It catalyzes the transformation of 3-cis and 3-trans-enoyl-CoA esters arising during the stepwise degradation of cis-, mono-, and polyunsaturated fatty acids to the 2-trans-enoyl-CoA intermediates.
Synonyms:	Dodecenoyl-CoA isomerase
Protein Pathways:	Fatty acid metabolism



[View online »](#)

Product images:

(LEFT) Western blot analysis of DCI Antibody (C-term) in MCF-7 cell line lysates (35ug/lane). DCI (arrow) was detected using the purified Pab.
(RIGHT) Western blot analysis of DCI Antibody (C-term) in mouse heart tissue lysates (35ug/lane). DCI (arrow) was detected using the purified Pab.