

## Product datasheet for **AP17980PU-N**

### PTGIS (C-term) Rabbit Polyclonal Antibody

#### Product data:

Product Type:	Primary Antibodies
Applications:	IHC, WB
Recommended Dilution:	<b>ELISA:</b> 1/1,000. <b>Western blotting:</b> 1/1,000. <b>Immunohistochemistry on Paraffin Sections:</b> 1/50-1/100.
Reactivity:	Human
Host:	Rabbit
Clonality:	Polyclonal
Immunogen:	KLH conjugated synthetic peptide between 472-500 amino acids from the C-terminal region of Human CYP8A1.
Specificity:	This antibody recognizes PTGIS.
Formulation:	PBS State: Purified State: Liquid purified Ig fraction Preservative: 0.09% (W/V) Sodium Azide
Concentration:	lot specific
Purification:	Saturated Ammonium Sulfate (SAS) precipitation followed by dialysis against PBS
Conjugation:	Unconjugated
Storage:	Store undiluted at 2-8°C for one month or (in aliquots) at -20°C for longer. Avoid repeated freezing and thawing.
Stability:	Shelf life: one year from despatch.
Predicted Protein Size:	57104 kDa
Gene Name:	prostaglandin I2 (prostacyclin) synthase
Database Link:	<a href="#">Entrez Gene 5740 Human</a> <a href="#">Q16647</a>



[View online »](#)

**Background:**

CYP8A1 is a member of the cytochrome P450 superfamily of enzymes. The cytochrome P450 proteins are monooxygenases which catalyze many reactions involved in drug metabolism and synthesis of cholesterol, steroids and other lipids. However, this protein is considered a member of the cytochrome P450 superfamily on the basis of sequence similarity rather than functional similarity. This endoplasmic reticulum membrane protein catalyzes the conversion of prostglandin H2 to prostacyclin (prostaglandin I2), a potent vasodilator and inhibitor of platelet aggregation. An imbalance of prostacyclin and its physiological antagonist thromboxane A2 contribute to the development of myocardial infarction, stroke, and atherosclerosis.

**Synonyms:**

Prostacyclin Synthase, CYP8, CYP8A1

**Protein Families:**

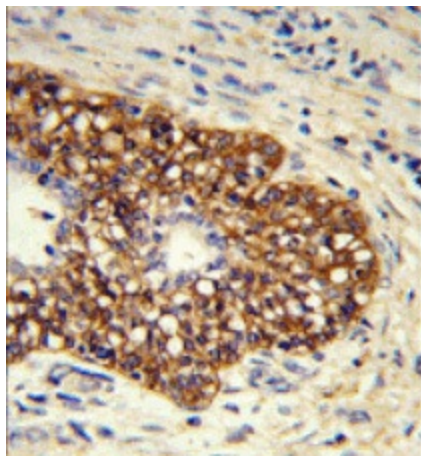
Druggable Genome, P450, Transmembrane

**Protein Pathways:**

Arachidonic acid metabolism, Metabolic pathways

**Product images:**

Western blot analysis of PTGIS Antibody (C-term) in CEM cell line lysates (35ug/lane). CYP8A1 (arrow) was detected using the purified Pab.



Formalin-fixed and paraffin-embedded human prostate carcinoma reacted with PTGIS Antibody (C-term), which was peroxidase-conjugated to the secondary antibody, followed by DAB staining.