

Product datasheet for **AP17979PU-N**

CYP7B1 Rabbit Polyclonal Antibody

Product data:

Product Type:	Primary Antibodies
Applications:	WB
Recommended Dilution:	ELISA: 1/1,000. Western blotting: 1/50 - 1/100.
Reactivity:	Human
Host:	Rabbit
Clonality:	Polyclonal
Immunogen:	KLH conjugated synthetic peptide selected from the Center region of human CYP7B1
Specificity:	This antibody reacts to CYP7B1.
Formulation:	PBS with 0.09% (W/V) sodium azide State: Liquid purified Ig
Concentration:	lot specific
Purification:	Saturated Ammonium Sulfate (SAS) precipitation
Conjugation:	Unconjugated
Storage:	Store the antibody undiluted at 2-8°C for one month or (in aliquots) at -20°C for longer. Avoid repeated freezing and thawing.
Stability:	Shelf life: one year from despatch.
Gene Name:	cytochrome P450 family 7 subfamily B member 1
Database Link:	Entrez Gene 9420 Human O75881
Background:	CYP7B1 is a member of the cytochrome P450 superfamily of enzymes. The cytochrome P450 proteins are monooxygenases which catalyze many reactions involved in drug metabolism and synthesis of cholesterol, steroids and other lipids. This endoplasmic reticulum membrane protein catalyzes the first reaction in the cholesterol catabolic pathway of extrahepatic tissues, which converts cholesterol to bile acids. This enzyme likely plays a minor role in total bile acid synthesis, but may also be involved in the development of atherosclerosis, neurosteroid metabolism and sex hormone synthesis.
Synonyms:	Cytochrome P450 7B1

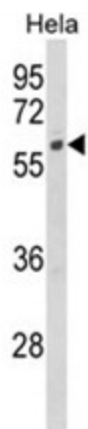


[View online »](#)

Protein Families: Druggable Genome, P450, Transmembrane

Protein Pathways: Primary bile acid biosynthesis

Product images:



Western blot analysis of CYP7B1 Antibody (Center) in HeLa cell line lysates (35ug/lane). CYP7B1 (arrow) was detected using the purified Pab.