

Product datasheet for **AP17978PU-N**

CYP4F3 (N-term) Rabbit Polyclonal Antibody

Product data:

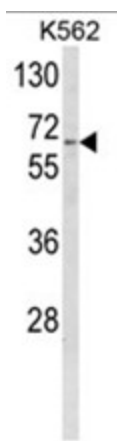
Product Type:	Primary Antibodies
Applications:	WB
Recommended Dilution:	ELISA: 1/1,000. Western blotting: 1/50- 1/100.
Reactivity:	Human
Host:	Rabbit
Clonality:	Polyclonal
Immunogen:	KLH conjugated synthetic peptide selected from the N-terminal region of human CYP4F3
Specificity:	This antibody reacts to CYP4F3.
Formulation:	PBS with 0.09% (W/V) sodium azide State: Liquid purified Ig
Concentration:	lot specific
Purification:	Saturated Ammonium Sulfate (SAS) precipitation
Conjugation:	Unconjugated
Storage:	Store the antibody undiluted at 2-8°C for one month or (in aliquots) at -20°C for longer. Avoid repeated freezing and thawing.
Stability:	Shelf life: one year from despatch.
Gene Name:	cytochrome P450 family 4 subfamily F member 3
Database Link:	Entrez Gene 4051 Human Q08477
Background:	CYP4F3 is a member of the cytochrome P450 superfamily of enzymes. The cytochrome P450 proteins are monooxygenases which catalyze many reactions involved in drug metabolism and synthesis of cholesterol, steroids and other lipids. This protein localizes to the endoplasmic reticulum. The enzyme starts the process of inactivating and degrading leukotriene B4, a potent mediator of inflammation.
Synonyms:	Cytochrome P450 4F3, CYP4F3, LTB4H
Protein Families:	Druggable Genome, P450, Transmembrane



[View online »](#)

Protein Pathways: Arachidonic acid metabolism, Metabolic pathways

Product images:



Western blot analysis of CYP4F3 Antibody (N-term) in K562 cell line lysates (35ug/lane). CYP4F3 (arrow) was detected using the purified Pab.