

Product datasheet for **AP17972PU-N**

Cytochrome P450 3A5 (CYP3A5) Rabbit Polyclonal Antibody

Product data:

Product Type:	Primary Antibodies
Applications:	WB
Recommended Dilution:	ELISA: 1/1,000. Western blotting: 1/50 - 1/100.
Reactivity:	Human
Host:	Rabbit
Clonality:	Polyclonal
Immunogen:	KLH conjugated synthetic peptide selected from the Center region of human CYP3A5
Specificity:	This antibody reacts to CYP3A5.
Formulation:	PBS with 0.09% (W/V) sodium azide State: Liquid purified Ig
Concentration:	lot specific
Purification:	Saturated Ammonium Sulfate (SAS) precipitation
Conjugation:	Unconjugated
Storage:	Store the antibody undiluted at 2-8°C for one month or (in aliquots) at -20°C for longer. Avoid repeated freezing and thawing.
Stability:	Shelf life: one year from despatch.
Gene Name:	cytochrome P450 family 3 subfamily A member 5
Database Link:	Entrez Gene 1577 Human P20815
Background:	CYP3A5 is a member of the cytochrome P450 superfamily of enzymes. The cytochrome P450 proteins are monooxygenases which catalyze many reactions involved in drug metabolism and synthesis of cholesterol, steroids and other lipids. This protein localizes to the endoplasmic reticulum and its expression is induced by glucocorticoids and some pharmacological agents. The enzyme metabolizes drugs such as nifedipine and cyclosporine as well as the steroid hormones testosterone, progesterone and androstenedione. Background References:
Synonyms:	Cytochrome P450 3A5, Cytochrome P450-PCN3, Cytochrome P450 HLp2

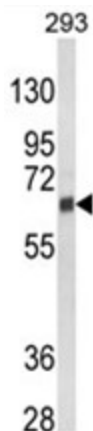


[View online »](#)

Protein Families: Druggable Genome, P450, Transmembrane

Protein Pathways: Drug metabolism - cytochrome P450, Drug metabolism - other enzymes, Linoleic acid metabolism, Metabolic pathways, Metabolism of xenobiotics by cytochrome P450, Retinol metabolism

Product images:



Western blot analysis of CYP3A5 Antibody (Center) in 293 cell line lysates (35ug/lane). CYP3A5 (arrow) was detected using the purified Pab.