

## Product datasheet for **AP17964PU-N**

### **CYP2A13 (C-term) Rabbit Polyclonal Antibody**

#### **Product data:**

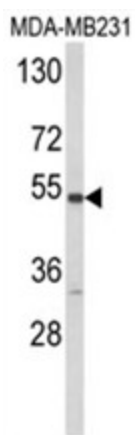
<b>Product Type:</b>	Primary Antibodies
<b>Applications:</b>	WB
<b>Recommended Dilution:</b>	ELISA: 1/1,000. Western blotting: 1/50 - 1/100.
<b>Reactivity:</b>	Human
<b>Host:</b>	Rabbit
<b>Clonality:</b>	Polyclonal
<b>Immunogen:</b>	KLH conjugated synthetic peptide selected from the C-terminal region of human CYP2A13
<b>Specificity:</b>	This antibody reacts to CYP2A13.
<b>Formulation:</b>	PBS with 0.09% (W/V) sodium azide State: Liquid purified Ig
<b>Concentration:</b>	lot specific
<b>Purification:</b>	Saturated Ammonium Sulfate (SAS) precipitation
<b>Conjugation:</b>	Unconjugated
<b>Storage:</b>	Store the antibody undiluted at 2-8°C for one month or (in aliquots) at -20°C for longer. Avoid repeated freezing and thawing.
<b>Stability:</b>	Shelf life: one year from despatch.
<b>Gene Name:</b>	cytochrome P450 family 2 subfamily A member 13
<b>Database Link:</b>	<a href="#">Entrez Gene 1553 Human Q16696</a>
<b>Background:</b>	CYP2A13 is a member of the cytochrome P450 superfamily of enzymes. The cytochrome P450 proteins are monooxygenases which catalyze many reactions involved in drug metabolism and synthesis of cholesterol, steroids and other lipids. This protein localizes to the endoplasmic reticulum. Although its endogenous substrate has not been determined, it is known to metabolize 4-(methylnitrosamino)-1-(3-pyridyl)-1-butanone, a major nitrosamine specific to tobacco.
<b>Synonyms:</b>	Cytochrome P450 2A13, CYP11A13
<b>Protein Families:</b>	Druggable Genome, Transmembrane



[View online »](#)

**Protein Pathways:** Caffeine metabolism, Drug metabolism - cytochrome P450, Drug metabolism - other enzymes, Metabolic pathways, Retinol metabolism

**Product images:**



Western blot analysis of CYP2A13 Antibody (C-term) in MDA-MB231 cell line lysates (35ug/lane). CYP2A13 (arrow) was detected using the purified Pab.