

## Product datasheet for **AP17963PU-N**

### **CYP24A1 (C-term) Rabbit Polyclonal Antibody**

#### **Product data:**

<b>Product Type:</b>	Primary Antibodies
<b>Applications:</b>	IHC, WB
<b>Recommended Dilution:</b>	ELISA: 1/1,000. Western blotting: 1/50-1/100. Immunohistochemistry on Paraffin Sections: 1/50-1/100.
<b>Reactivity:</b>	Human
<b>Host:</b>	Rabbit
<b>Clonality:</b>	Polyclonal
<b>Immunogen:</b>	KLH conjugated synthetic peptide between 473~502 from the C-terminal region of Human CYP24A1
<b>Specificity:</b>	This antibody recognizes CYP24A1.
<b>Formulation:</b>	PBS with 0.09% (W/V) Sodium Azide as preservative. State: Liquid purified Ig fraction.
<b>Concentration:</b>	lot specific
<b>Purification:</b>	Saturated Ammonium Sulfate (SAS) Precipitation followed by dialysis against PBS.
<b>Conjugation:</b>	Unconjugated
<b>Storage:</b>	Store the antibody undiluted at 2-8°C for one month or (in aliquots) at -20°C for longer. Avoid repeated freezing and thawing.
<b>Stability:</b>	Shelf life: one year from despatch.
<b>Gene Name:</b>	cytochrome P450 family 24 subfamily A member 1
<b>Database Link:</b>	<a href="#">Entrez Gene 1591 Human Q07973</a>
<b>Background:</b>	CYP24A1 is a member of the cytochrome P450 superfamily of enzymes. The cytochrome P450 proteins are monooxygenases which catalyze many reactions involved in drug metabolism and synthesis of cholesterol, steroids and other lipids. This mitochondrial protein initiates the degradation of 1,25-dihydroxyvitamin D3, the physiologically active form of vitamin D3, by hydroxylation of the side chain. In regulating the level of vitamin D3, this enzyme plays a role in calcium homeostasis and the vitamin D endocrine system.

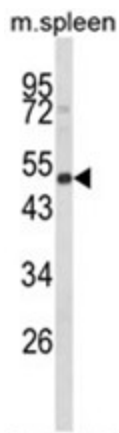


[View online »](#)

**Synonyms:** CYP24, Cytochrome P450 24A1, Vitamin D3 24-hydroxylase, 24-OHase, Cytochrome P450-CC24

**Protein Families:** Druggable Genome

**Product images:**



Western blot analysis of CYP24A1 Antibody (C-term) in mouse spleen tissue lysates (35ug/lane). CYP24A1 (arrow) was detected using the purified Pab.