

Product datasheet for **AP17961PU-N**

ACKR3 (C-term) Rabbit Polyclonal Antibody

Product data:

Product Type:	Primary Antibodies
Applications:	IHC, WB
Recommended Dilution:	ELISA: 1/1,000. Western blotting: 1/1,000. Immunohistochemistry on Paraffin sections: 1/50-1/100.
Reactivity:	Human, Mouse
Host:	Rabbit
Clonality:	Polyclonal
Immunogen:	KLH conjugated synthetic peptide between 330-358 amino acids from the C-terminal region of Human CXCR7.
Specificity:	This antibody reacts to CXCR7.
Formulation:	PBS with 0.09% (W/V) Sodium Azide as preservative State: Aff - Purified State: Liquid purified Ig fraction
Concentration:	lot specific
Purification:	Affinity Chromatography on Protein A
Conjugation:	Unconjugated
Storage:	Store the antibody undiluted at 2-8°C for one month or (in aliquots) at -20°C for longer. Avoid repeated freezing and thawing.
Stability:	Shelf life: one year from despatch.
Gene Name:	atypical chemokine receptor 3
Database Link:	Entrez Gene 12778 Mouse Entrez Gene 57007 Human P25106
Background:	CXCR7 is a member of the G-protein coupled receptor family. Although this protein was earlier thought to be a receptor for vasoactive intestinal peptide (VIP), it is now considered to be an orphan receptor, in that its endogenous ligand has not been identified. The protein is also a coreceptor for human immunodeficiency viruses (HIV).
Synonyms:	CXC-R7, CXCR-7, CMKOR1, GPR-159, RDC1

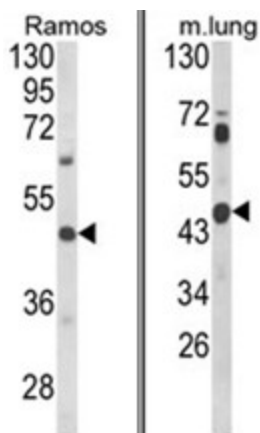


[View online »](#)

Note: **Calculated MW:** 41493 Da

Protein Families: Druggable Genome, GPCR, Transmembrane

Product images:



(LEFT) Western blot analysis of CXC7 Antibody (C-term) in Ramos cell line lysates (35ug/lane). CXC7 (arrow) was detected using the purified Pab. (RIGHT) Western blot analysis of CXC7 Antibody (C-term) in mouse lung tissue lysates (35ug/lane). CXC7 (arrow) was detected using the purified Pab.