

Product datasheet for **AP17959PU-N**

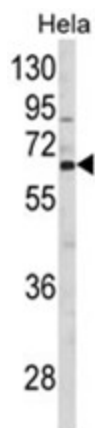
CTPS2 (N-term) Rabbit Polyclonal Antibody

Product data:

| | |
|-----------------------|--|
| Product Type: | Primary Antibodies |
| Applications: | WB |
| Recommended Dilution: | ELISA: 1/1,000. Western blotting: 1/100 - 1/500. |
| Reactivity: | Human |
| Host: | Rabbit |
| Clonality: | Polyclonal |
| Immunogen: | KLH conjugated synthetic peptide selected from the N-term region of human CTPS2 |
| Specificity: | This antibody reacts to CTPS2. |
| Formulation: | PBS with 0.09% (W/V) sodium azide State: Liquid purified Ig |
| Concentration: | lot specific |
| Purification: | Affinity chromatography on Protein A |
| Conjugation: | Unconjugated |
| Storage: | Store the antibody undiluted at 2-8°C for one month or (in aliquots) at -20°C for longer. Avoid repeated freezing and thawing. |
| Stability: | Shelf life: one year from despatch. |
| Gene Name: | CTP synthase 2 |
| Database Link: | Entrez Gene 56474 Human Q9NRF8 |
| Background: | CTPS2 catalyzes the formation of CTP from UTP with the concomitant eamination of glutamine to glutamate. This protein is the rate-limiting enzyme in the synthesis of cytosine nucleotides, which play an important role in various metabolic processes and provide the precursors necessary for the synthesis of RNA and DNA. Cancer cells that exhibit increased cell proliferation also exhibit an increased activity of this encoded protein. Thus, this protein is an attractive target for selective chemotherapy. |
| Synonyms: | UTP-ammonia ligase 2, CTP synthetase 2, CTPS2 |
| Protein Pathways: | Metabolic pathways, Pyrimidine metabolism |



[View online »](#)

Product images:

Western blot analysis of CTPS2 Antibody (N-term) in HeLa cell line lysates (35ug/lane). CTPS2 (arrow) was detected using the purified Pab.