

Product datasheet for **AP17951PU-N**

COTL1 (C-term) Rabbit Polyclonal Antibody

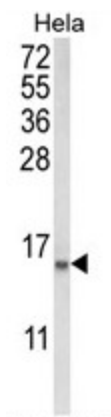
Product data:

Product Type:	Primary Antibodies
Applications:	WB
Recommended Dilution:	ELISA: 1/1,000. Western blotting: 1/100 - 1/500.
Reactivity:	Human
Host:	Rabbit
Clonality:	Polyclonal
Immunogen:	KLH conjugated synthetic peptide selected from the C-terminal region of human COTL1
Specificity:	This antibody reacts to COTL1.
Formulation:	PBS with 0.09% (W/V) sodium azide State: Liquid purified Ig
Concentration:	lot specific
Purification:	Affinity chromatography on Protein A
Conjugation:	Unconjugated
Storage:	Store the antibody undiluted at 2-8°C for one month or (in aliquots) at -20°C for longer. Avoid repeated freezing and thawing.
Stability:	Shelf life: one year from despatch.
Gene Name:	coactosin like F-actin binding protein 1
Database Link:	Entrez Gene 23406 Human Q14019
Background:	COTL1 is one of the numerous actin-binding proteins which regulate the actin cytoskeleton. This protein binds F-actin, and also interacts with 5-lipoxygenase, which is the first committed enzyme in leukotriene biosynthesis.
Synonyms:	COTL1, CLP



[View online »](#)

Product images:



Western blot analysis of COTL1 Antibody (C-term) in HeLa cell line lysates (35ug/lane). COTL1 (arrow) was detected using the purified Pab.