

Product datasheet for **AP17941PU-N**

CEP55 (N-term) Rabbit Polyclonal Antibody

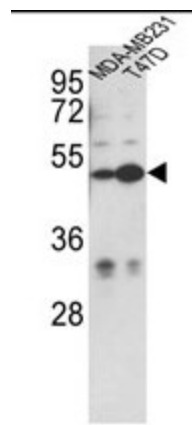
Product data:

Product Type:	Primary Antibodies
Applications:	WB
Recommended Dilution:	ELISA: 1/1,000. Western blotting: 1/100 - 1/500.
Reactivity:	Human
Host:	Rabbit
Clonality:	Polyclonal
Immunogen:	KLH conjugated synthetic peptide selected from the N-terminal region of human CEP55
Specificity:	This antibody reacts to CEP55.
Formulation:	PBS with 0.09% (W/V) sodium azide State: Liquid purified Ig
Concentration:	lot specific
Purification:	Affinity chromatography on Protein A
Conjugation:	Unconjugated
Storage:	Store the antibody undiluted at 2-8°C for one month or (in aliquots) at -20°C for longer. Avoid repeated freezing and thawing.
Stability:	Shelf life: one year from despatch.
Gene Name:	centrosomal protein 55
Database Link:	Entrez Gene 55165 Human Q53EZ4
Background:	CEP55 Plays a role in mitotic exit and cytokinesis. Not required for microtubule nucleation. Recruits PDCD6IP and TSG101 to midbody during cytokinesis.
Synonyms:	C10orf3, URCC6
Protein Families:	Druggable Genome



[View online »](#)

Product images:



Western blot analysis of CEP55 Antibody (N-term) in MDA-MB231, T47D cell line lysates (35ug/lane). CEP55 (arrow) was detected using the purified Pab.