

Product datasheet for **AP17940PU-N**

HDHD5 Rabbit Polyclonal Antibody

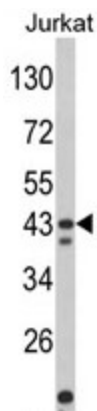
Product data:

Product Type:	Primary Antibodies
Applications:	WB
Recommended Dilution:	ELISA: 1/1,000. Western blotting: 1/100 - 1/500.
Reactivity:	Human
Host:	Rabbit
Clonality:	Polyclonal
Immunogen:	KLH conjugated synthetic peptide selected from the Center region of human CECR5
Specificity:	This antibody reacts to CECR5.
Formulation:	PBS with 0.09% (W/V) sodium azide State: Liquid purified Ig
Concentration:	lot specific
Purification:	Affinity chromatography on Protein A
Conjugation:	Unconjugated
Storage:	Store the antibody undiluted at 2-8°C for one month or (in aliquots) at -20°C for longer. Avoid repeated freezing and thawing.
Stability:	Shelf life: one year from despatch.
Gene Name:	cat eye syndrome chromosome region, candidate 5
Database Link:	Entrez Gene 27440 Human Q9BXW7
Background:	CECR5 is widely expressed. There are 2 known isoforms produced by alternative splicing.
Synonyms:	CECR5



[View online »](#)

Product images:



Western blot analysis of CECR5 Antibody (Center) in Jurkat cell line lysates (35ug/lane). CECR5 (arrow) was detected using the purified Pab.